

Typhoon ULV Cold Fogger



Key Features

- ▶ The Typhoon ULV Cold Fogger features full benefit of ultra low volume fogging technology of dispensing water or oil based chemical formulations.
- ▶ With its powerful electric motor, Typhoon distributes the fine droplets evenly over the affected area and delivers a particle size between 5 to 40 microns. The needle dosage control knob allows a liquid output flow from a lowest output of 10 ml/min in the ULV range to a maximum of 170 ml/min to create heavy mist depending on the viscosity of the liquid to be fogged.
- ▶ Typhoon ULV Cold Fogger can be used to apply disinfectants, pesticides, deodorants, fungicides, duct sealants, miticides, etc much safer, more efficiently and economically in a variety of areas like hospitals, food and beverage processing plants, poultry and other livestock farms, dairies, schools, hotels, resorts, greenhouses, etc.

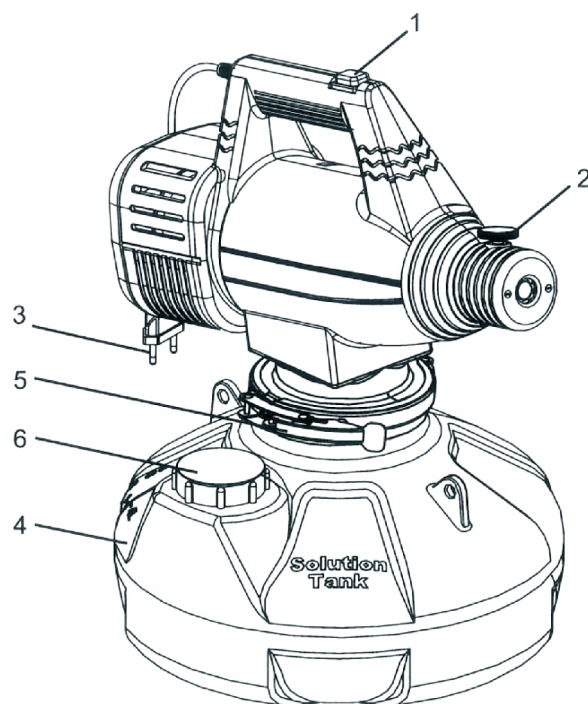
Technical data

Description	
Electric Motor	220-240 V, 50/60 Hz, 800 W
Solution Tank	5 L HDPE with side filling, UV light resistant
Output	10-170 ml/min with needle dosage control
Shoulder Strap	Yes. Double woven, 50 mm wide
Weight	3.1 Kg
Air Velocity	approx 130 m/s

Consumption:

Flow rate of the liquid being used can be adjusted using the needle value as below :

Regulator Turn	Output (approx. ml/min)
1/4	25
1/2	60
3/4	85
1	115
1 1/4	140
1 1/2	150



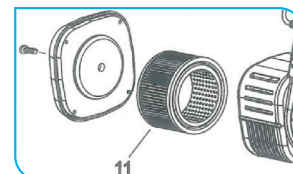
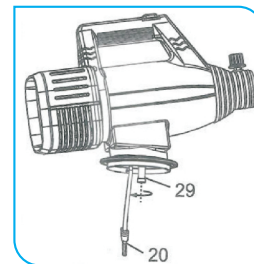
1. on-off switch
2. flow register control knob
3. power cord

4. solution tank
5. closure ring
6. filling cap

Typhoon ULV Cold Fogger Use Overview

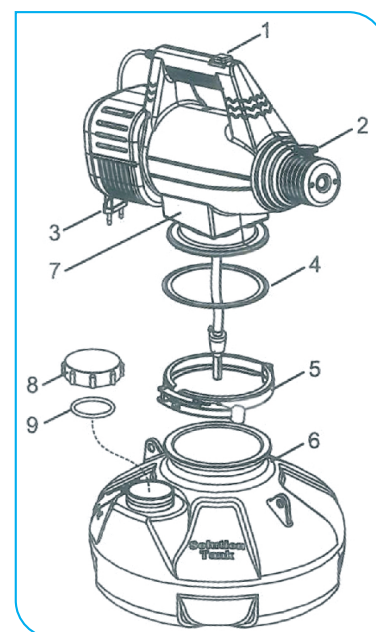
Maintenance

- The only maintenance required is an occasional cleaning of the liquid filter (20) and the PP filter (29). Remove the filter and rinse it with running water to remove the clinging particles.
- Avoid contamination when changing chemicals : Fogging with clean water (or appropriate solvent) through unit and rinse tank thoroughly.
- Periodically check the cleanliness of the air filter (11). If the motor does breathe a sufficient quantity of clean air, the fogging operation will be inefficient and the motor could be overheated.
- Check seal, gasket, tube and hose for leakage. Replace if necessary. Make sure the PE filters and solution filter are clean.



User instructions

- Make sure the plug (3) is disconnected from the power socket.
- When you use the appliance for the first time or if you have not used it for a while, remove the closure ring (5) and check the tank (6) is clean.
- Replace the power head (7), making sure the tank gasket (4) is in place and return the closure ring (5) to its position.
- Pour the solution into the tank (6) then close the filling cap (8), make sure the o-ring (9) is in position.
- Before connecting the power cord (3) to a power socket, make sure that
 - flow control knob (2) on close position
 - switch (1) is set to the off position.
- Aim the nozzle in the required direction and switch on the appliance.
- Adjust to flow control knob for the quantity of product to be distributed.
- When using solution which creates foam, to keep foam from penetrating into the power head (7) to damage the motor (1), in any case, the foam level should be kept lower than the PE filter (29).
- Plan your job in such a way that the appliance draws in as little fog as possible. Work so that you leave the treated areas through untreated areas in the exit direction.



Stop the Appliance

- Once fogging is complete, close the control knob before switching off the appliance.
- Remove residues of solution and empty tank, fog using warm water.



For More Information

Please contact your local Diversey representative.

Diversey India Pvt. Ltd.

501, 5th Floor, Ackruti Centre Point, MIDC Central Road, Andheri (East), Mumbai 400 093. INDIA

Tel.: +91 22 6644 4222, Fax: +91 22 6644 4223

Toll Free No.: 1800 209 2095 • Website: www.diversey.com

Only for professional users / specialists. The manufacturer guarantees the quality of this product. Application recommendations are based on tests and practical experience; the manufacturer declines all responsibility for damages from improper product use.